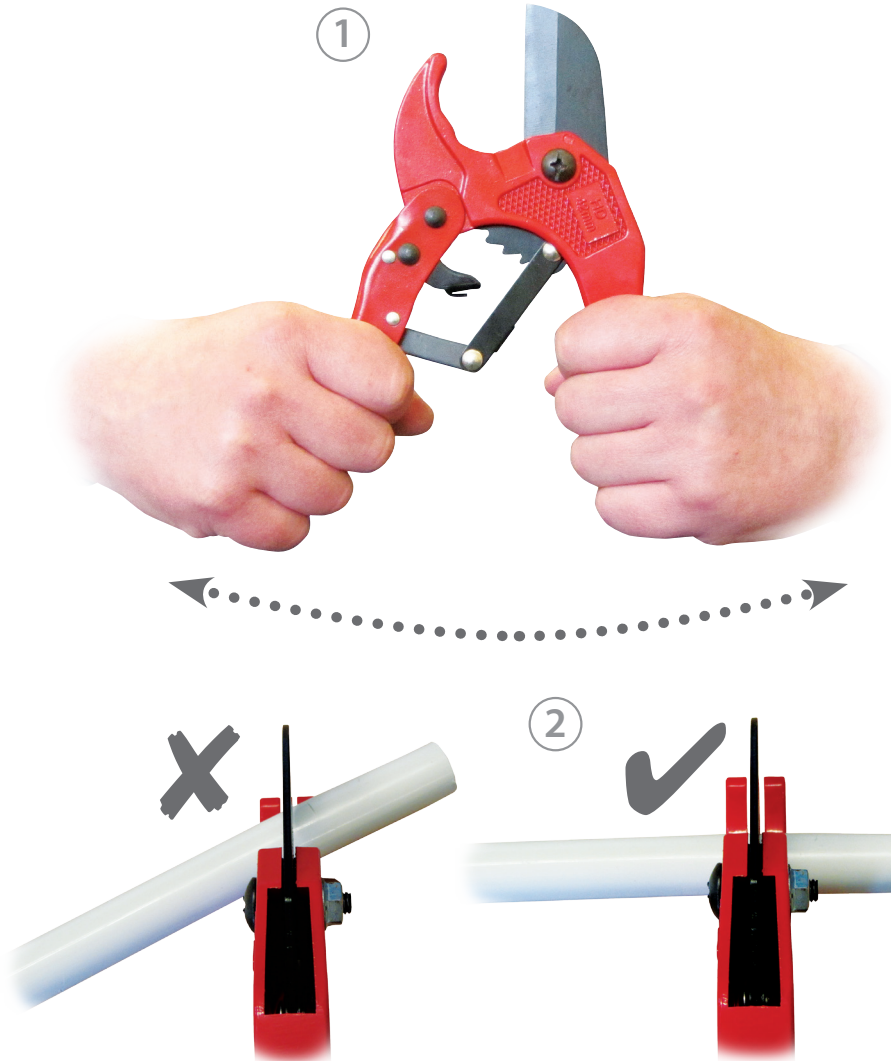


Pipe cutters must be used to ensure a clean cut and square end to the pipe.



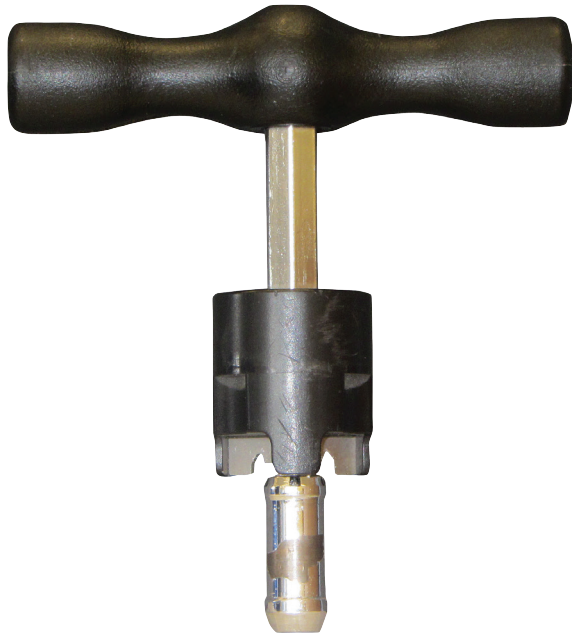
Pipe Cutter



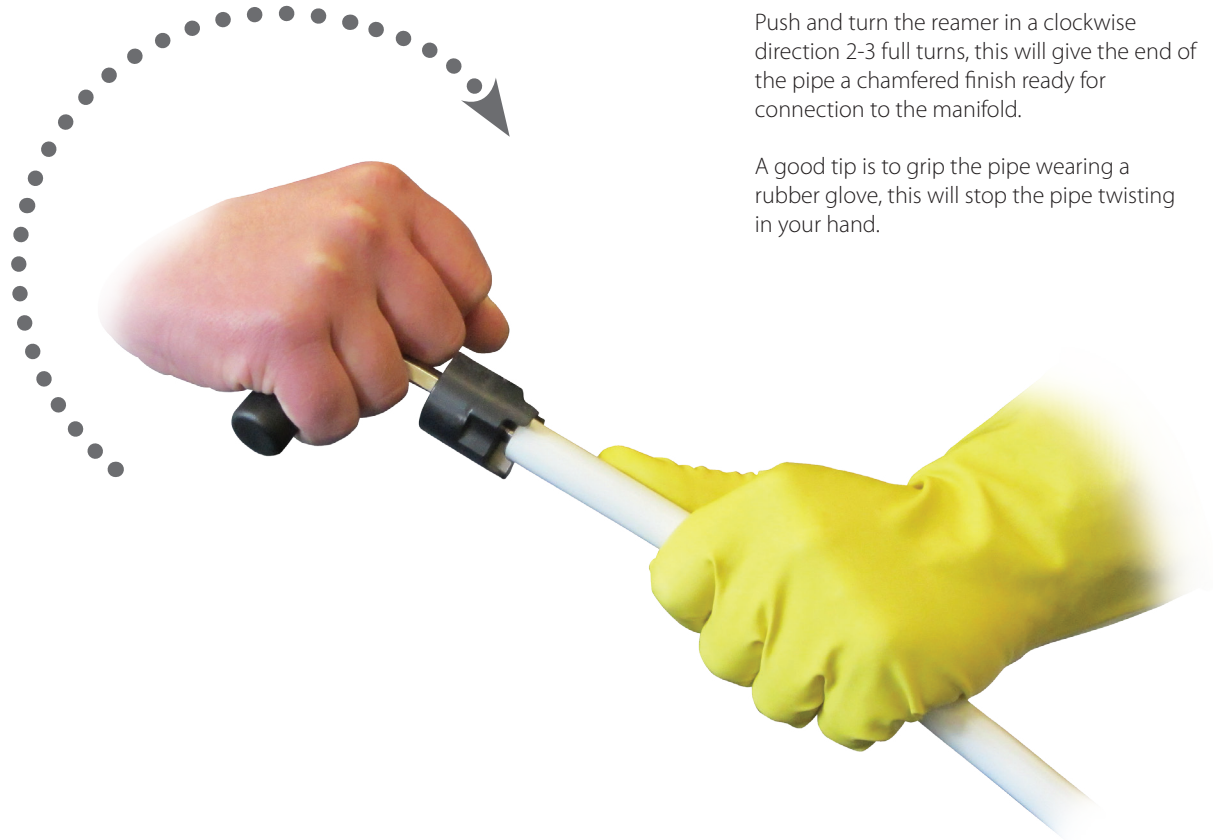
Operating instructions.

- 1 Open pipe cutters fully by pulling handles fully apart.
- 2 Insert pipe into pipe cutter jaws begin to close pipe cutters by squeezing handles together, To close the jaws repeatedly squeeze the handles together and then release. This will cause the jaws to close and cut the pipe, fully cut through the pipe ensuring the end of the pipe is cut square.

Once cut with cutters, the end of the pipe must be prepared using our reamer before connecting to the manifold.



Pipe Reamer



Operating instructions.

Insert our reamer fully into the end of the pipe so that the pipe is in contact with the three cutting teeth.

Push and turn the reamer in a clockwise direction 2-3 full turns, this will give the end of the pipe a chamfered finish ready for connection to the manifold.

A good tip is to grip the pipe wearing a rubber glove, this will stop the pipe twisting in your hand.

2