

wunda

Smart Switch

Installation Guide



Included in the box:

- Smart Switch
- Power supply unit
- Three-wire cable 2.5m

Tools required:

- Device with the **WundaSmart app** and with Internet access
- Flathead screwdriver
- Phillips screwdriver
- 2 x M2 screws

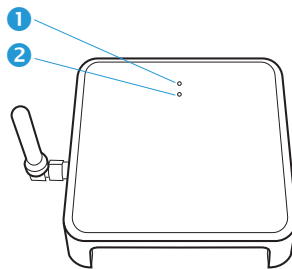
Manufacturer

Wunda Group PLC
Unit 10
Kingsway Buildings, Kingsway
Bridgend Industrial Estate,
Bridgend,
Glamorgan,
CF31 3YH

If for any reason you need to return your Wunda Smart products, simply return the product in its original box to us at the above address. Any return is subject to our refund policy so please don't forget to check the terms and conditions.

By using Wunda Smart and other Wunda Smart products you agree to our terms and conditions, which can be found on our website www.wundasmart.com

The device appearance



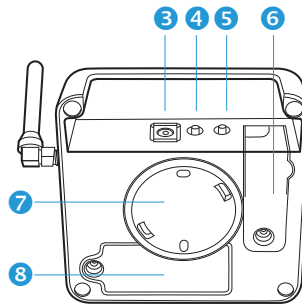
The first LED 1 indicates the pairing with the HUB and lights in two colours:

- **Green** light to signify the switch is paired with SmartHub,
- **Red** to signify the switch is not connected to the SmartHub.

The second LED 2 indicates relay status:

During normal operation flashes every 10 seconds:

- **Green**, if the relay is on (closed contacts: COM-NO, open contacts: COM-NC)
- **Red**, if the relay is off (closed contacts: COM-NC, open contacts: COM-NO)



Located on the Smart Switch's underside are:

- 3** power supply connector,
- 4** button 1,
- 5** button 2,
- 6** terminal block compartment,
- 7** wall bracket,
- 8** battery compartment.

Smart Switch location

Smart Switch should be situated far from any metal obstacles, transformers, engines, fluorescent lamps, microwave devices, refrigerators and other industrial equipment.

TEST mode of the relay

At any time (even when the relay is not paired to the control panel) you can press and hold the **5** button, the LED **2** will light up with continuous light, in the following color:

- **Green**, if the relay is on (closed contacts: COM-NO, open contacts: COM-NC)
- **Red**, if the relay is off (closed contacts: COM-NC, open contacts: COM-NO)
- The **next pressing** of the button **2 5** changes the state of the relay and the color of the diode

After **60 seconds** from the last press of the button **5**, the device will automatically return to the working mode.

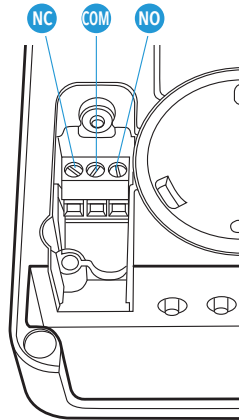
You can **exit the TEST** mode at any point by pressing the **4** button.

Hot Water Tank

⚠ CAUTION: High voltage cables. Turn off the power before you start installation.

Turn off the power for your installation.

Connect the **three-wire cable** to the Smart Switch terminal block **6** as shown in drawing below:

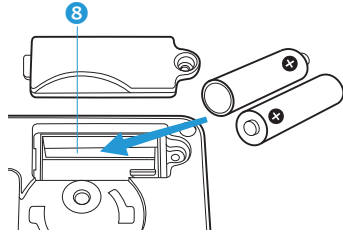


Attach wires to corresponding connections::

1. black wire connect to **NO**
- normally open
2. brown wire connect to **COM**
- common
3. grey wire connect to **NC**
- normally close (optional)

Close terminal compartment with cover and turn on power in your installation.

Connect the **Smart Switch** to the power supply **5** or put two AAA 1.5V batteries in to the compartment **8**



Registering the device

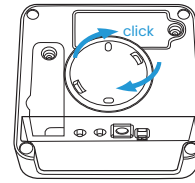
Open the **WundaSmart application** and log in to your **Smart Hub**, select the **Devices** from main menu and choose **Add new device**. Select **Smart Switch for gas boiler** or **Smart Switch for hot water tank**.

- You have 30 seconds to **pair the Smart Switch**. Press the button **4** located on the **Smart Switch** underside and wait until the LED **1** starts emitting continuous green light. (about 8 seconds)

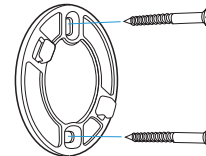
The installed Smart Switch will appear on the device list.

Fixing to the wall (optional)

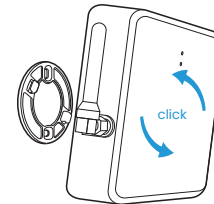
- Disconnect the bracket **7** from the device,



- Using two screws, fix the bracket **7** to the wall,



- Reconnect the Smart Switch to the mounted wall bracket.



Technical data

Nominal supply voltage:	12VDC power adapter included in the set
Alternate supply voltage	2×1.5 V, alkaline battery AAA type
Maximum transmit power	<5 dBm e.r.p.
Radio communications:	869.85MHz, two-way
Radio coverage:	up to 500m in an open area
External aerial:	yes (in the set)
Signaling	LED (RGB)
1 SPDT Relay output	NO-COM-NC (3-way) 3A/250V AC
Operating temperature range:	5–45°C (excluding condensation)
Degree of protection	IP20
Dimensions	98×98×28 mm (without aerial)

